

# FIXED PULVERIZER RFP45



IT



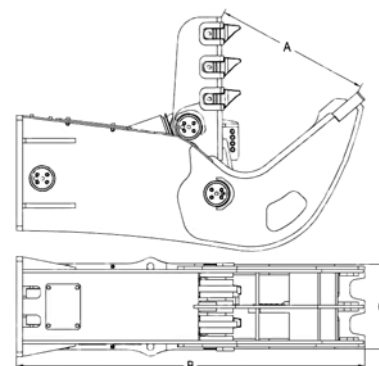
MADE IN ITALY <

EXCELLENT FOR SECONDARY DEMOLITION <

HARDOX WEAR-RESISTANT PARTS <

INTERCHANGEABLE TEETH, BLADES  
& PLATE <

MATCH IT WITH



## DATA SHEET

	EU	USA
<b>Excavator weight</b>	40 - 60 t	40 - 60 t
<b>Equipment weight</b>	4500 kg	9921 lb
<b>Opening A</b>	1080 mm	42,5 inch
<b>Length B</b>	2700 mm	106 inch
<b>Width C</b>	600 mm	23,6 inch
<b>Maximum oil pressure</b>	340 bar	4930 psi
<b>Required oil supply</b>	300 - 350 L/min	79 - 92 gal/min

[www.ramtec.it](http://www.ramtec.it) | [info@ramtec.it](mailto:info@ramtec.it) |  +39 3499813724 | +39 0803388199



Data and pictures are not binding. The manufacturer can improve attachments without notice.