

FIXED PULVERIZER RFP6

IT



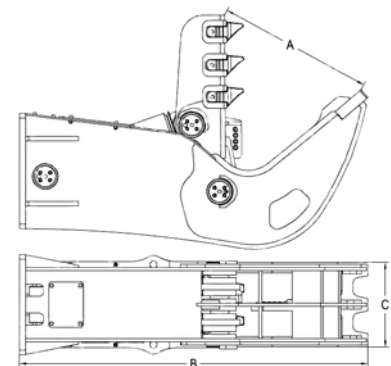
MADE IN ITALY <

EXCELLENT FOR SECONDARY DEMOLITION <

HARDOX WEAR-RESISTANT PARTS <

INTERCHANGEABLE TEETH, BLADES <

& PLATE



MATCH IT WITH



DATA SHEET

	EU	USA
Excavator weight	6 - 9 t	6 - 9 t
Equipment weight	500 kg	1102 lb
Opening A	510 mm	20 inch
Length B	1300 mm	51 inch
Width C	330 mm	13 inch
Maximum oil pressure	250 bar	3625 psi
Required oil supply	80 - 100 L/min	21 - 26 gal/min

www.ramtec.it | info@ramtec.it |  +39 3499813724 | +39 0803388199



Data and pictures are not binding. The manufacturer can improve attachments without notice.